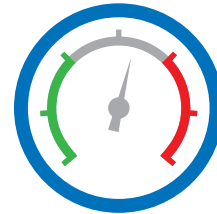
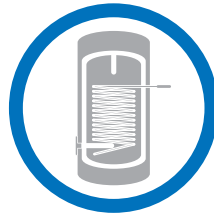
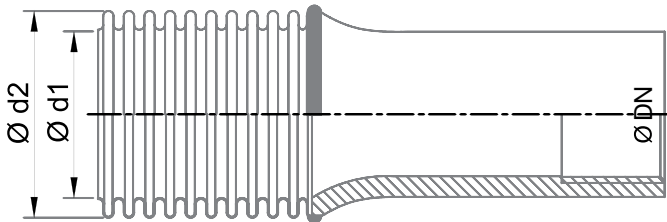


# BOILER HOSES | MH 211K



Wide pitch  
 Available with or without end fittings  
 Fittings can be produced according to customer specifications.  
 Major area of application: **Boilers and Heat Exchanger Coils**  
 Hose Material: **AISI316L (1.4404)**  
 Sizes: **DN 20 – DN 40**



DN		Type	d1	d2	Tolerance	Working Pressure at 20° C	Surface Area	Weight	Length
mm	inch		mm	mm	mm	bar	m <sup>2</sup> /m	kg/m	m
20	3/4"	MH 211 K	20,4	26,7	± 0,3	16	0,130	0,305	10-100
25	1"	MH 211 K	25,4	31,9	± 0,4	12	0,191	0,382	10-100
32	1 1/4"	MH 211 K	34,5	41,1	± 0,4	10	0,221	0,553	10-100
40	1 1/2"	MH 211 K	40,5	49,6	± 0,4	10	0,255	0,800	10-100