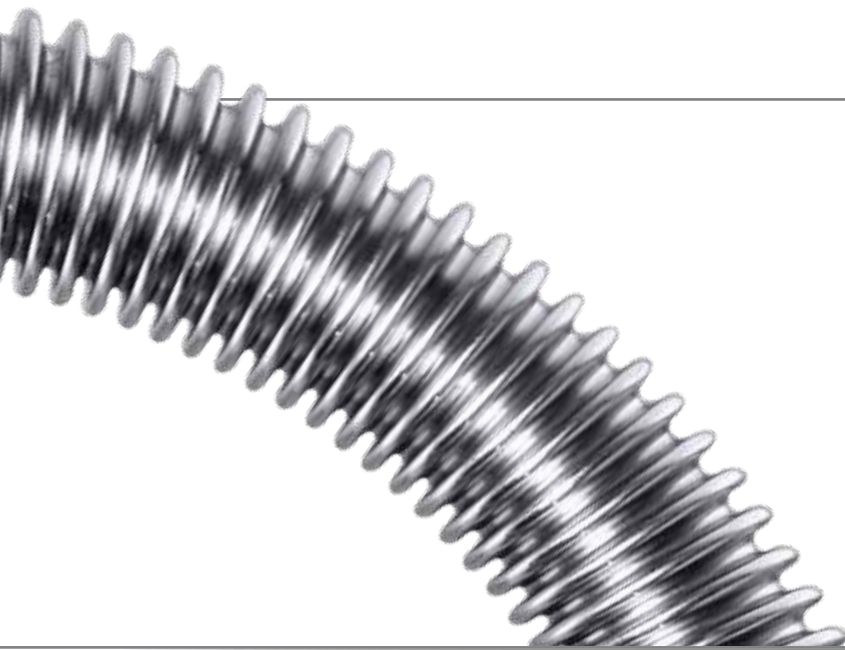
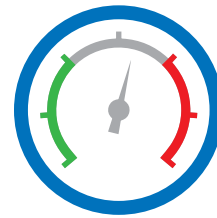
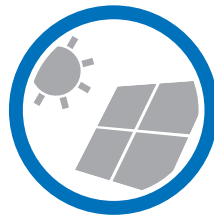
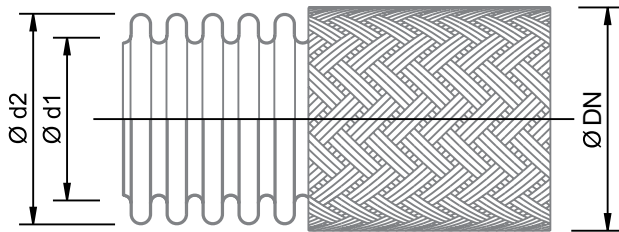


SOLAR HOSES | MH 211



Wide pitch
Major area of application: **Solar industry,**
heating systems.
Hose Material : **AISI316L (1.4404)**
Sizes: **DN 12 – DN 50**



DN		Type	d1	d2	Tolerance	Bend Radius Once-only Bending	Working Pressure at 20° C	Surface Area	Weight	Length
mm	inch		mm	mm	mm		bar	m ² /m	kg/m	m
12	1/2"	MH 211	12,4	16,5	± 0,3	20	21	0,072	0,085	10-100
16	5/8"	MH 211	16,3	21,4	± 0,3	25	16	0,096	0,136	10-100
20	3/4"	MH 211	20,4	26,7	± 0,3	30	10	0,136	0,192	10-100
25	1"	MH 211	25,4	31,9	± 0,4	35	10	0,174	0,273	10-100
32	1 1/4"	MH 211	34,5	41,1	± 0,4	40	4	0,203	0,35	10-100
40	1 1/2"	MH 211	40,5	49,6	± 0,4	50	4	0,285	0,56	10-100
50	2"	MH 211	50,7	60,1	± 0,4	60	3	0,35	0,686	10-100