

intermetalflex
A **KLINGER** Company

FLEXIBLE METAL HOSES

İst. E.T. Serbest Böl. 6. Sokak No:111 34957

Tuzla - İstanbul / TURKEY

T: +90 216 526 08 86

F: +90 216 526 12 88

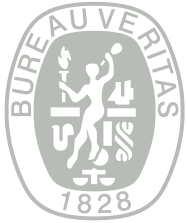


intermetalflex

A **KLINGER** Company

CERTIFICATES

Our certificates include:
ISO 9001 – 2008 by TÜV-Süd
CE Certificate by Bureau Veritas.



BUREAU
VERITAS



5.000

m² manufacturing space



45

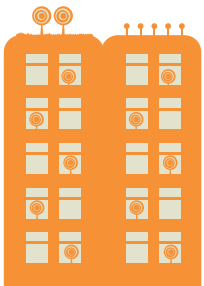
over employees



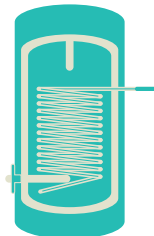
1.000.000

meters of flexible metal hoses

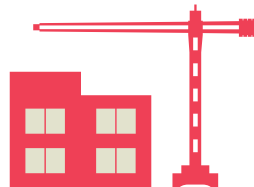
APPLICATIONS



high-rise apartments



boilers



infrastructure



chemical industries



industrial applications



INTERMETALFLEX A.Ş. was established as a German-Turkish joint venture company in 2003, producing Flexible Metal Hoses in İstanbul, Turkey. In late 2016, INTERMATLFLEX A.Ş. became a part of KLINGER Group of Companies.

100% of all manufactured parts are exported to well-known companies in Germany, Austria, Italy, U.K., Sweden, U.S.A., Australia...

Our product range includes boiler hoses, heat exchanger hoses, solar hoses, district heating hoses, and flexible braided and unbraided metal hoses for various applications.

We also produce complete heat exchanger coils with frame, and pre-insulated hoses with high temperature composite insulation.

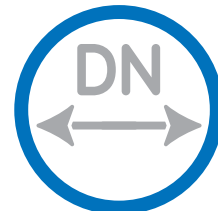
Size range is DN 06 to DN 150.

Our Metal Hose Production Lines and their special machinery were designed, manufactured, and operated by our own engineering group.

INDUSTRIAL APPLICATION HOSES | MH 201 OG - MH 201 MG



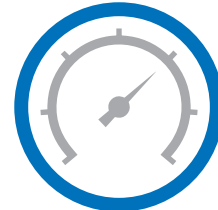
MH 201 OG without braiding
MH 201 MG with braiding
Hose Material : **AISI316L (1.4404)**
Braid Material : **AISI304 (1.4301)**
Sizes: **DN 6 – DN 50**



mm/inch
6-50
1/4"-2"



standard
MH 201 OG
MH 201 MG



bar-OG
1,6-34

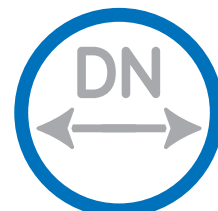


bar-MG
24-198

LARGE DIAMETER HOSES | MH 301 OG - MH 301 MG



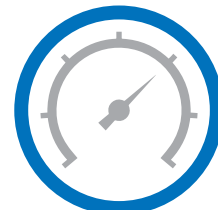
MH 301 OG without braiding
MH 301 MG with braiding
Standard pitch
Hose Material : **AISI316L (1.4404) - AISI304 (1.4301)**
Sizes: **DN 65 – DN 150**



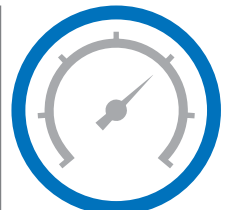
mm/inch
65-150
2 1/2" - 6"



standard
MH 301 OG
MH 301 MG

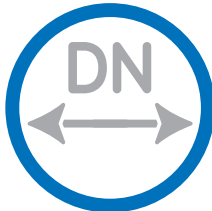


bar-OG
0,6/6



bar-MG
1,2/25

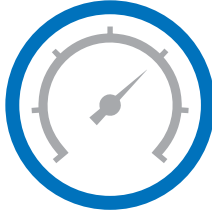
BOILER HOSES | MH 211K



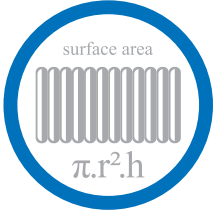
mm/inch
20 - 40
3/4" - 1 1/2"



wide heavy
MH 211 K



bar
16 - 10



m²/m
0,130 - 0,225

Wide pitch
Available with or without end fittings
Fittings can be produced according to customer specifications.
Major area of application: **Boilers and Heat Exchanger Coils**
Hose Material : **AISI316L (1.4404)**
Sizes: **DN 20 – DN 40**

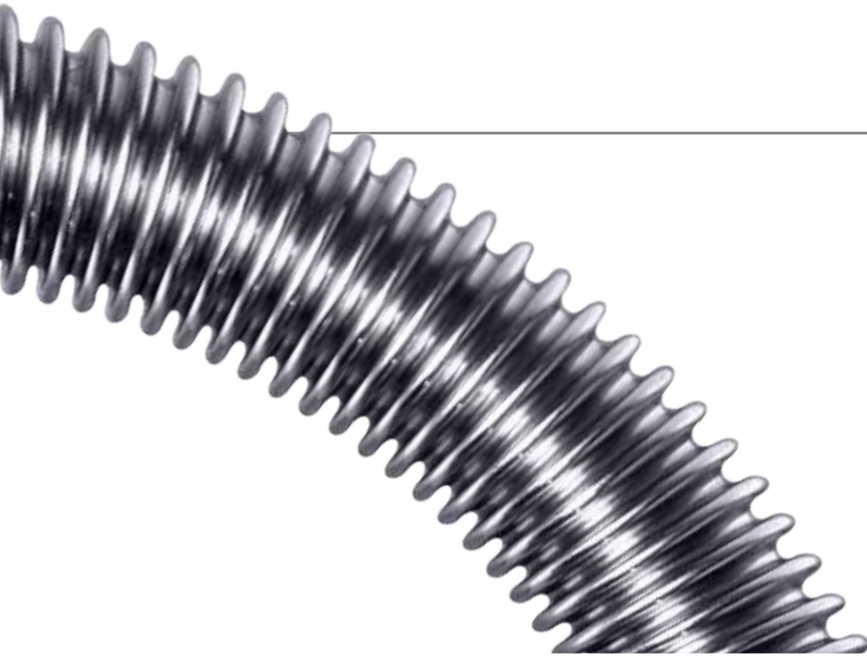
VARIOUS TYPES OF FITTINGS



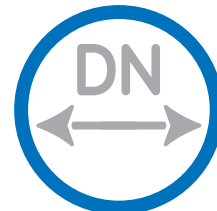
BOILER HOSES | MH 211K

Complete Heat Exchanger Coil with frame
Tailor made according to customer specifications
Fittings can be produced according to customer specifications
Hose Material : **AISI316L (1.4404)**

SOLAR HOSES | MH 211



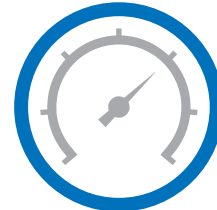
Wide pitch
 Major area of application: **Solar industry, heating systems.**
 Hose Material : **AISI316L (1.4404)**
 Sizes: **DN 12 – DN 50**



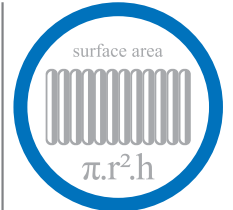
mm/inch
 12-50
 1/2" - 2"



wide
 MH 211



bar
 3-21

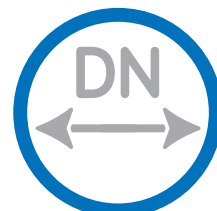


surface area
 $\pi.r^2.h$
m²/m
 0,072-0,350

HIGH PRESSURE HOSES | MH 221 OG - MH 221 MG



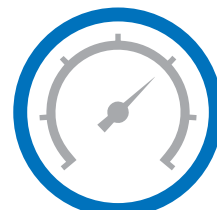
MH 221 OG without braiding
 MH 221 MG with braiding
 Hose Material : **AISI316L (1.4404)**
 Braid Material : **AISI304 (1.4301)**
 Sizes: **DN 6 – DN 16**



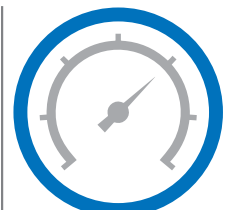
mm/inch
 6-16
 1/4" - 5/8"



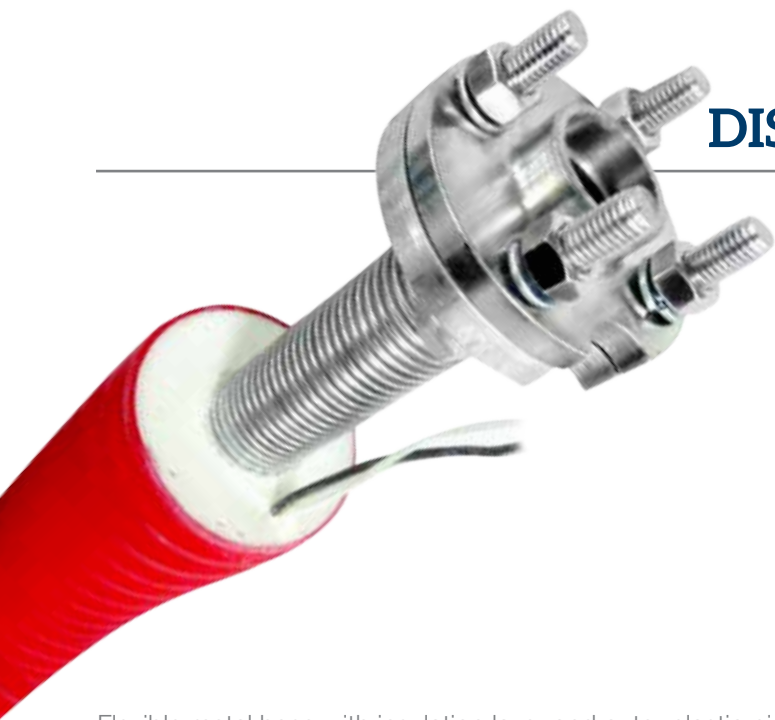
heavy
 MH 221 OG
 MH 221 MG



bar-OG
 22/185



bar-MG
 43/345



DISTRICT HEATING HOSES | DH

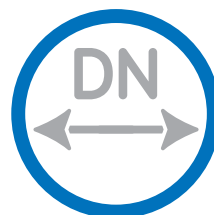
Flexible metal hose with insulation layer and outer plastic pipe.

Major Area of Application: **District Heating Lines**

Hose (Service Pipe) Material: **AISI304 (1.4301)**

Insulation Material: **PUR**

Outer Pipe: **PE**



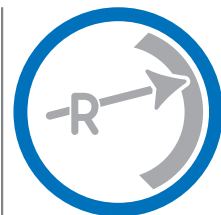
mm
30-150



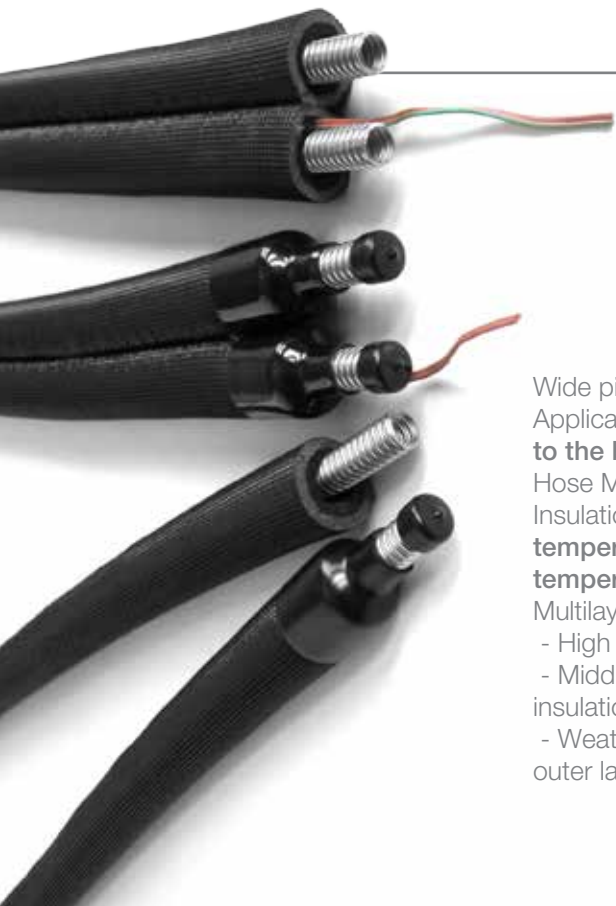
extra heavy
DH30-DH150



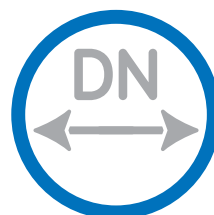
mm
0,3-0,9



bend mm
200-950



HT COMPOSITE PRE-INSULATED HOSES | MH 211



mm
12-25



wide
MH211



13 mm



line
single or double

Wide pitch

Application: **Solar industry, solar collector to the boiler**

Hose Material : **AISI316L (1.4404)**

Insulation: **Resistant to 150°C continuous temperature 175°C temporary temperature.**

Multilayer insulation consists of:

- High temperature resistant inside layer.
- Middle layer of standart crosslinked PE insulation.
- Weather and UV resistant protective outer layer.